



Thank you for purchasing the Futureglass **Bold Reception Desk!**

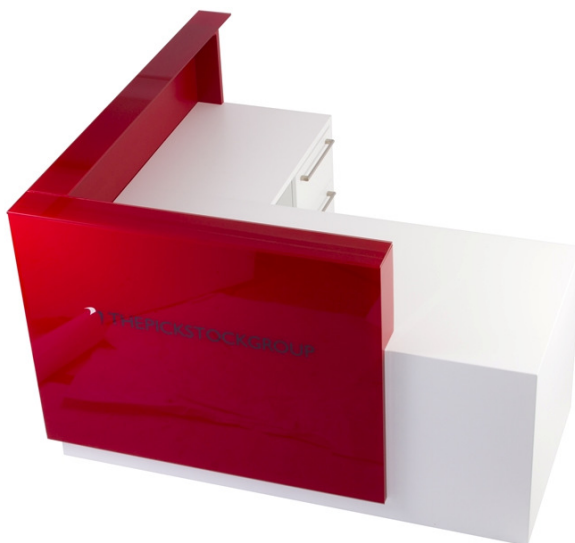


The Bold Reception desk is assembled at site for your convenience.

Please take a few moments to read these instructions to get the most from the unit.

## ASSEMBLY INSTRUCTIONS

The Bold Reception desk is assembled for your convenience.



The glass supplied is toughened to BS6206A for safety. In order to maximize this safety; please follow the following precautions.

- |  |   |
|--|---|
| 1. Never drag the table - Always lift with assistance              | 8. Avoid subjecting the table to impact.  |
| 2. Replace any damaged glass with that of identical specification. | 9. Never sit or stand on the table.   |
| 3. Never place heavy objects onto the table.                       | 10. The table is not suitable for rough use   |
| 4. Use a suitable non-abrasive glass cleaner.                      | 11. Always lift the table by the glass to move it, never drag it or lift by the legs.   |
| 5. Take care when moving the table.                                | 12. In the unlikely event of breakage, a competent person must clear thoroughly the area of sharp shards of glass, which may cut. |
| 6. Take care in positioning the table.                             |   |
| 7. Never place hot pans onto the table.                            |   |